

PRACTICAL GUIDANCE TO IMPLEMENT HEART FAILURE TREATMENT WITH SGLT2I IN THE OUTPATIENT SETTING

PRESENTED BY STEFAN ANKER, THERESA MCDONAGH, JAVED BUTLER, MARIA ROSA COSTANZO, SHELLEY ZIEROTH | 27 AUGUST 2023

Optimal global implementation of SGLT2i in HF could result in a significant real-world benefit¹

Global prevalence of HF: **64 million**

Estimated patients with HF eligible for SGLT2i: **50 million**

Optimal implementation of SGLT2i globally



7–8 million projected reduction in worsening HF events or CV deaths*

*Based on NNT to prevent worsening HF event/CV death^{5,6,10-12}

1. Talha KM, et al. *Eur J Heart Fail.* 2023;25:999. 2. Heidenreich, PA et al. *J Am Coll Cardiol.* 2022;79:e263. 3. Metra M et al, *Eur J Heart Fail.* 2023;25:1115. 4. McDonagh T, et al. *Eur Heart J.* 2023;ehad195. 5. van Riet EES, et al. *Eur J Heart Fail.* 2014;16:772. 6. Reddy YNV, et al. *Circulation.* 2018;138:861. 7. Pleske B, et al. *Eur Heart J.* 2019;40:3297.

Guidelines recommend early administration of SGLT2i for patients with HF irrespective of LVEF

HFrEF

There are fundamental changes in the approach to HF treatment²⁻⁴

- 1 **No fixed order** for sequence of therapies
- 2 **Prioritize initiation** over up-titration of dose
- 3 **Speed of initiating** lifesaving therapies **matters**

HFmrEF

HFpEF

Underdiagnosis is a huge problem in HFpEF and is often missed in patients with multiple comorbidities

We can't treat what we can't see

In studies documenting under diagnosis of HF, most patients (76%) with unrecognized HF were found to have HFpEF⁵

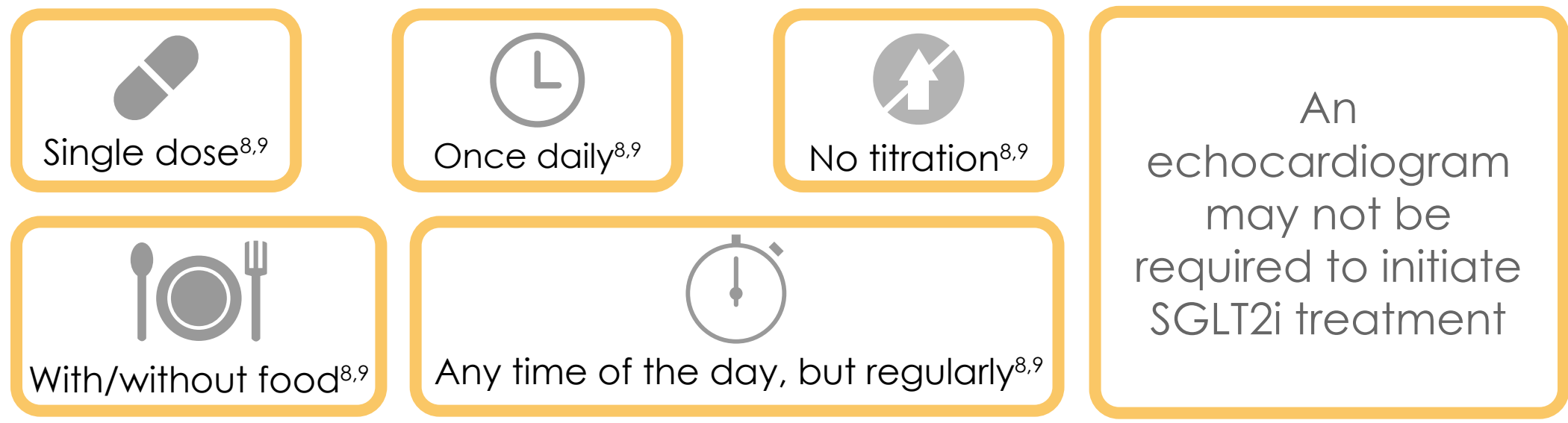


Score-based algorithms such as **H₂FPEF score**⁶ or **HFA-PEFF algorithm**⁷ can help indicate the likelihood of HFpEF

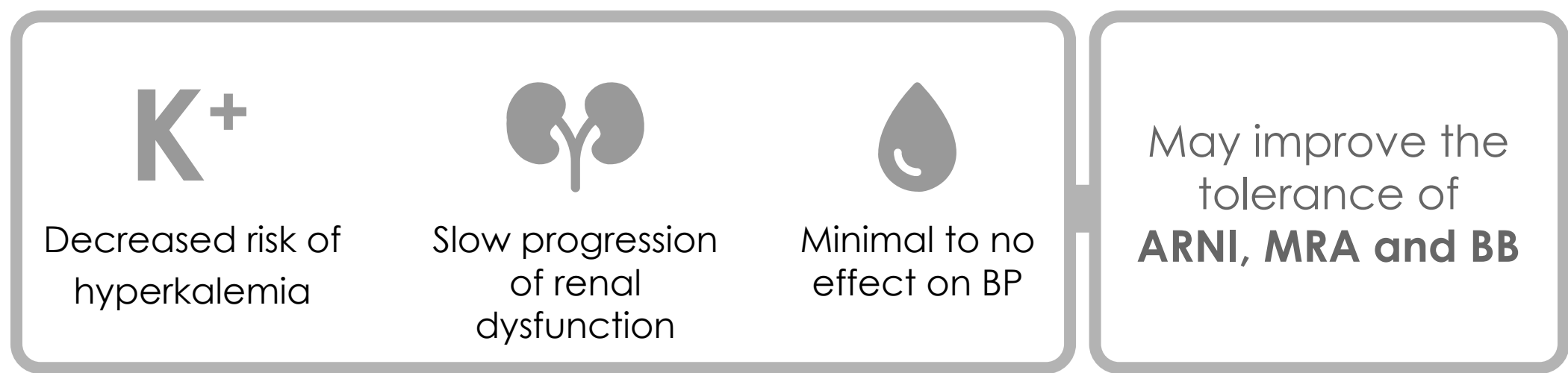
PRACTICAL GUIDANCE TO IMPLEMENT HEART FAILURE TREATMENT WITH SGLT2i IN THE OUTPATIENT SETTING

PRESENTED BY STEFAN ANKER, THERESA MCDONAGH, JAVED BUTLER, MARIA ROSA COSTANZO, SHELLEY ZIEROTH | 27 AUGUST 2023

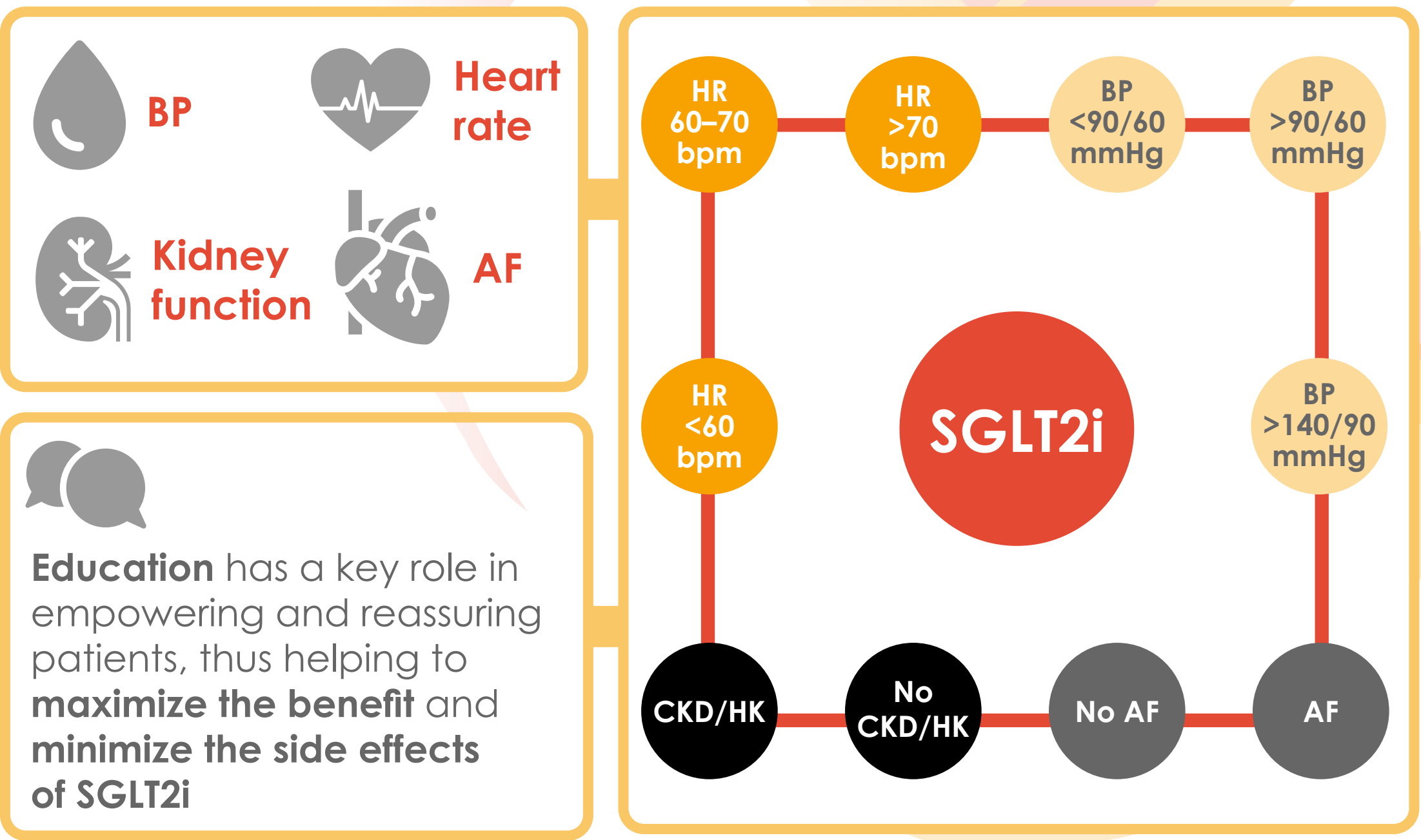
SGLT2i are simple to use



SGLT2i may improve tolerance of other HF therapies



SGLT2i are the only foundational therapy that can be used without modification for the multiple patient phenotypes based on



Education has a key role in empowering and reassuring patients, thus helping to **maximize the benefit** and **minimize the side effects** of SGLT2i

7. Pleske B, et al. *Eur Heart J*. 2019;40:3297. 8. Jardiance® Summary of Product Characteristics, BI international GmbH. 9. Forxiga® Summary of Product Characteristics. AstraZeneca AB. 10. Greene SJ, et al. *Eur J Heart Fail*. 2021;23:1525. 11. Docherly KF, Petrie MC. *Heart*. 2022;108:312.